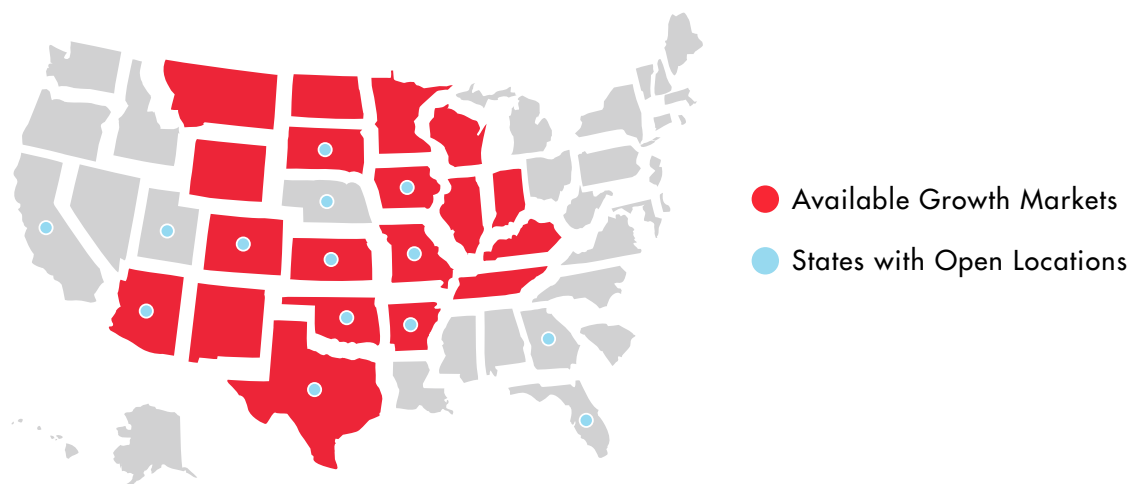




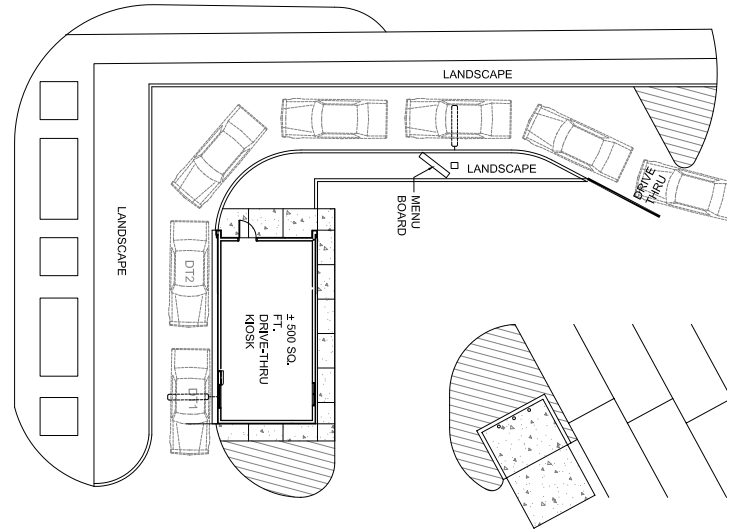
We specialize in hand-tamped espresso drinks, baked-from-scratch pastries, fruit smoothies and we showcase our signature drink, the Caramelicious®.

The Scooter's Coffee "drive-thru kiosk" model is the original business model of the company and remains at the core of our brand. However, we have also experienced success with our drive-thru coffeehouses, where it serves as a gathering place for our customers to enjoy quality coffee, impeccable service and a welcoming atmosphere. We also tailor our business models for special locations, such as airports, malls, hospitals and hotels.



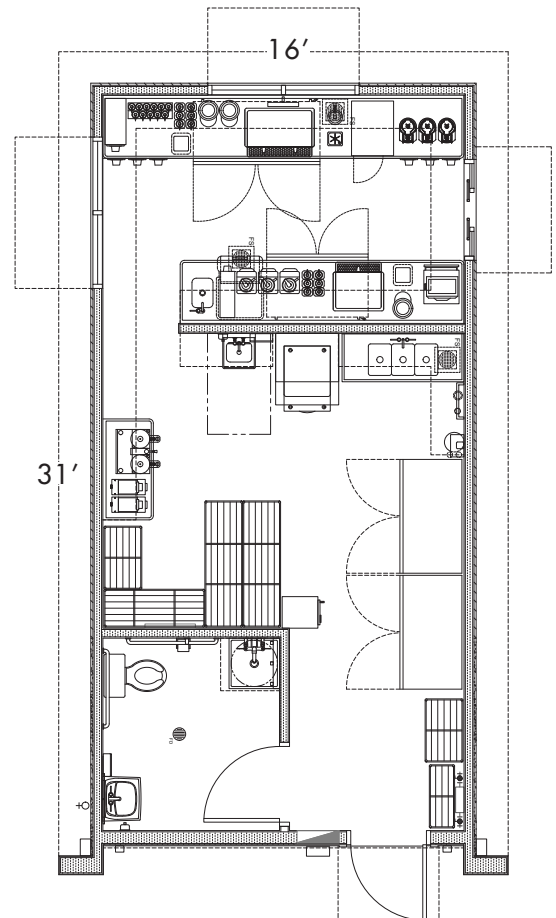


## SCOOTER'S COFFEE / DRIVE-THRU COFFEE KIOSK



Prototype Site Plan

- BUILDING:** 500 sq ft
- LOT SIZE:** 2,000 - 5,000 sq ft
- PARKING:** 4 employee parking stalls
- WATER & SEWER:** Required
- VOICE & DATA:** Required
- GAS:** Not required
- GREASE TRAP:** Per city codes
- DRIVE-THRU LANE:** Stacking must meet city codes
- WALK-UP WINDOW:** Optional
- PATIO:** Optional
- SIGNAGE:** Maximum allowed by city/landlord



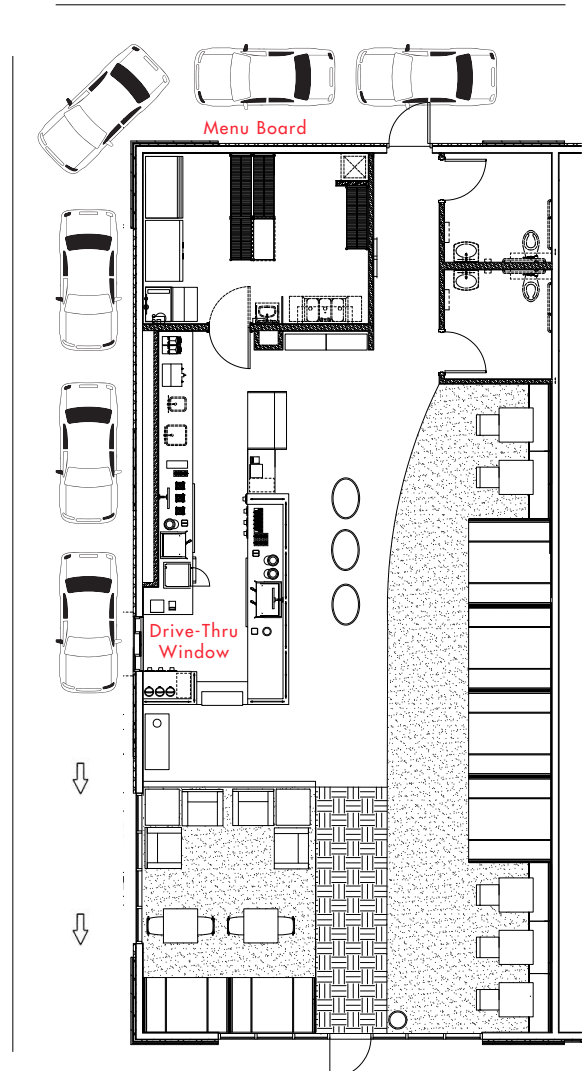
Prototype Floor Plan



## SCOOTER'S COFFEE / DRIVE-THRU COFFEEHOUSE



- BUILDING: 1,600 - 1,800 sq ft
- PARKING: Per city requirement
- HVAC: 7.5 tons
- ELECTRIC: 400 amps, 3 phase
- WATER & SEWER: Required
- VOICE & DATA: Required
- GAS: Required
- GREASE TRAP: Per city codes
- ORDER BOX: 1 (required)
- DRIVE-THRU WINDOW: 1 (required)
- DRIVE-THRU LANE: Stacking must meet city codes
- PATIO: Preferred
- RESTROOMS: 2 ADA restrooms
- SPRINKLERS: Required
- SIGNAGE: Maximum allowed by city/landlord)



Prototype Floor Plan

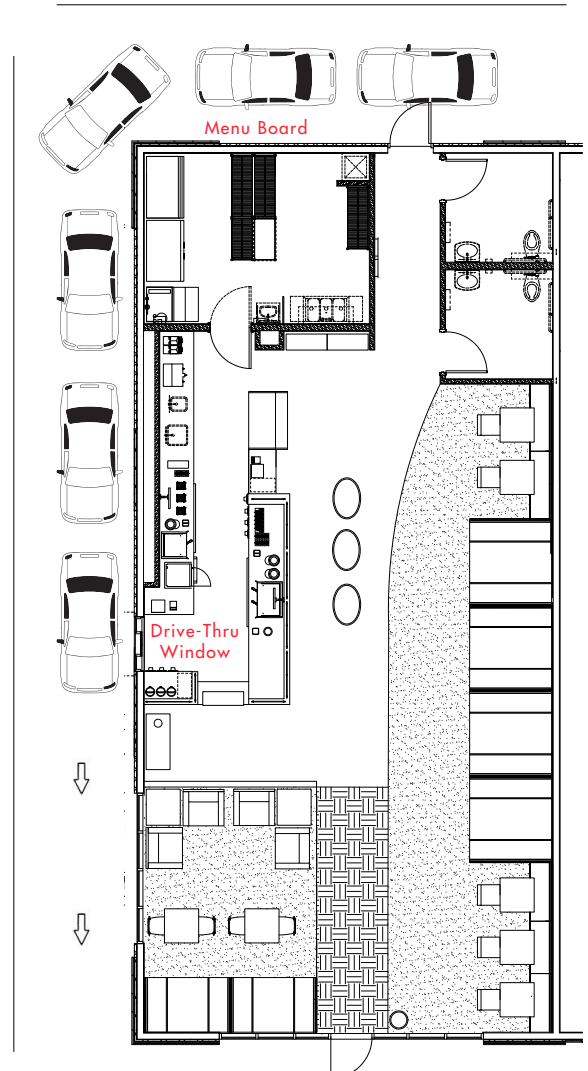




## SCOOTER'S COFFEE / DRIVE-THRU COFFEEHOUSE



- BUILDING:** 1,600 - 1,800 sq ft
- PARKING:** Per city requirement
- HVAC:** 7.5 tons
- ELECTRIC:** 400 amps, 3 phase
- WATER & SEWER:** Required
- VOICE & DATA:** Required
- GAS:** Required
- GREASE TRAP:** Per city codes
- ORDER BOX:** 1 (required)
- DRIVE-THRU WINDOW:** 1 (required)
- DRIVE-THRU LANE:** Stacking must meet city codes
- PATIO:** Preferred
- RESTROOMS:** 2 ADA restrooms
- SPRINKLERS:** Required
- SIGNAGE:** Maximum allowed by city/landlord)



Prototype Floor Plan